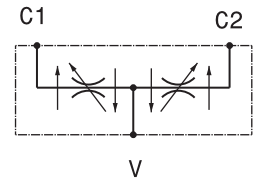
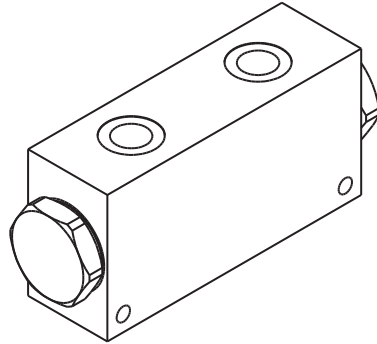


Divisore – riunificatore di flusso  
*Flow divider combiner*  
 mod. DFR (3/4" - 1" BSP)



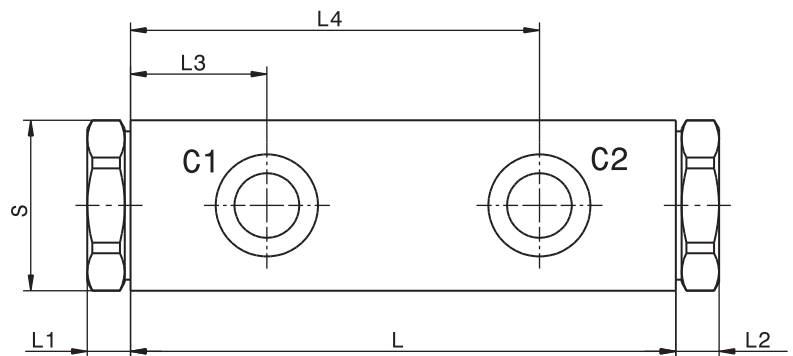
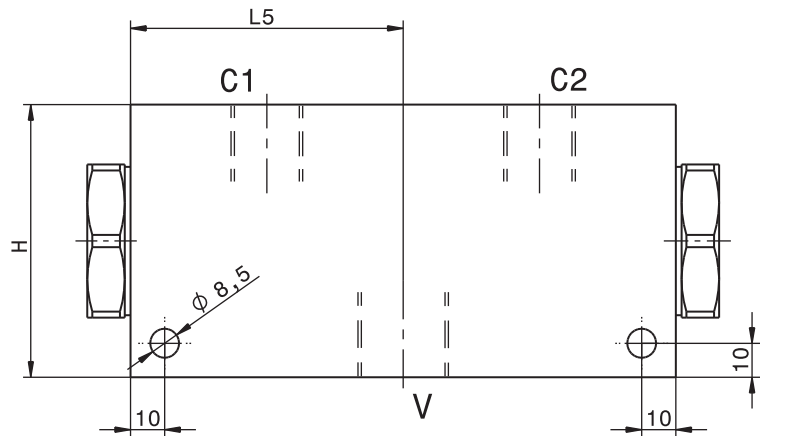
Corpo in alluminio  
*Aluminium body*

Codice Code	DFR-34 Q	DFR-10 Q
06	60 ÷ 95 l/min 16 ÷ 25 gpm	60 ÷ 95 l/min 16 ÷ 25 gpm
07	90 ÷ 150 l/min 24 ÷ 40 gpm	90 ÷ 150 l/min 24 ÷ 40 gpm

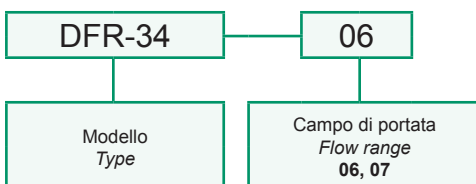
Codice Code	DFR-34	DFR-10
Pressione max Max pressure	250 bar 3600 psi	250 bar 3600 psi
Errore max di divisione Flow accuracy of inlet flow	± 3%	

Dati e tarature ottenuti usando olio con viscosità 30 cSt a 50°C  
 Performances and calibrations are carried out by using hydraulic oil with 30 cSt viscosity at 50°C

Viscosità consigliate Recommended viscosity	10 ÷ 420 cSt
Temperature di lavoro Working temperature	-20 ÷ +90 °C
Filtrazione assoluta Absolute filtration	25 µ



Sigla di ordinazione / Ordering code



Modello Type	L	L1	L2	L3	L4	L5	H	S	V	C1,C2	Pressione max Max pressure
DFR-34	160	13	13	40	120	80	80	50	3/4" GAS	1/2" GAS	250 bar 3600 psi
DFR-10	160	13	13	40	120	80	80	50	1" GAS	3/4" GAS	250 bar 3600 psi

I dati non sono impegnativi, CBF si riserva di apportare modifiche senza preavviso.  
 The specifications are not binding, CBF reserves the right to introduce modifications without notice.