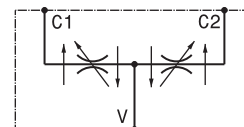
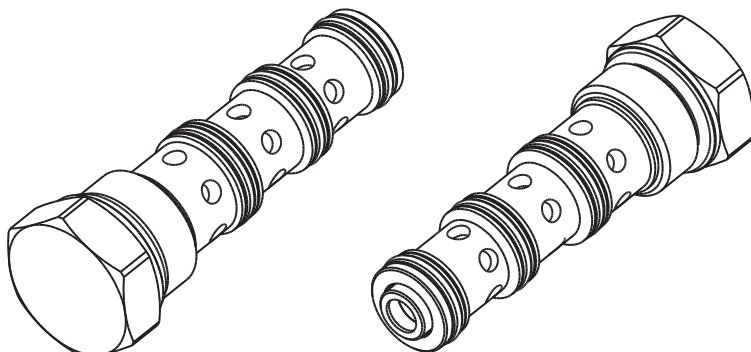


Divisore – riunificatore di flusso a cartuccia  
 Flow divider combiner – cartridge type  
 mod. DFR-16-C

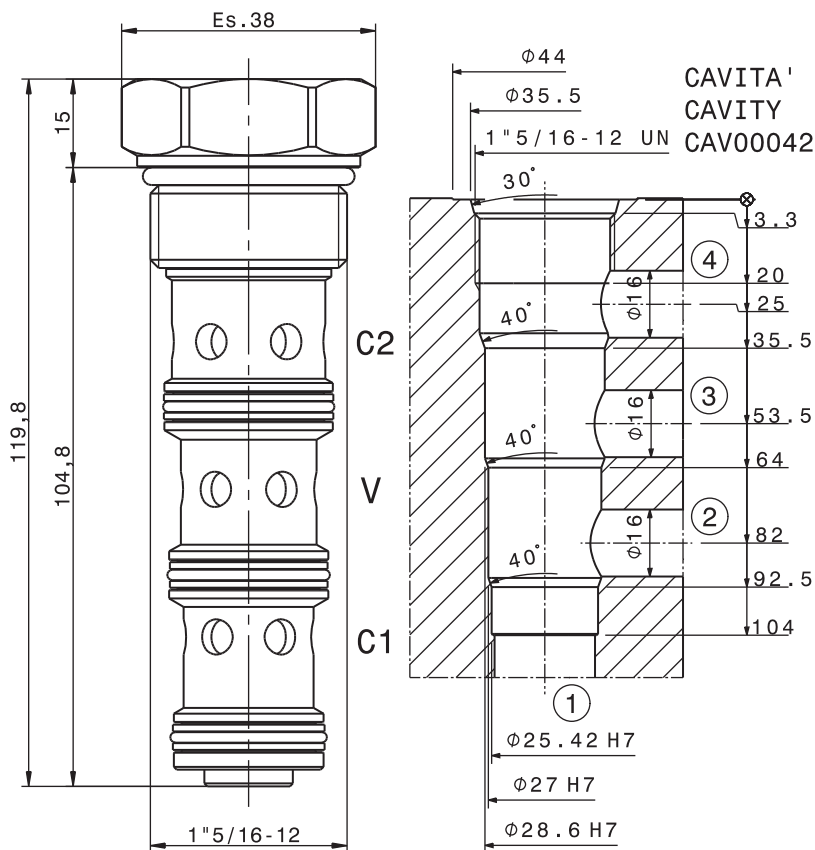


Portata massima Max flow	150 l/min 40 gpm
Pressione massima Max pressure	350 bar 5000 psi
Coppia di serraggio Installation torque	180 ÷ 210 Nm 135 ÷ 157 lbf ft
Errore max di divisione Flow accuracy of inlet flow	± 3%

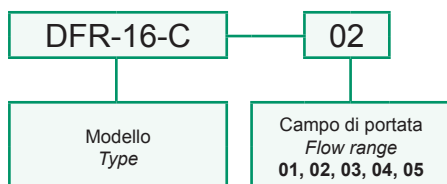
Dati e tarature ottenuti usando olio con viscosità 30 cSt a 50°C  
 Performances and calibrations are carried out by using hydraulic oil with 30 cSt viscosity at 50°C

Viscosità consigliate Recommended viscosity	10 ÷ 420 cSt
Temperatura di lavoro Working temperature	-20 ÷ +90 °C
Filtrazione assoluta Absolute filtration	25 µ

Codice Code	Campo di portata Flow range
01	20 ÷ 32 l/min 5.3 ÷ 8.4 gpm
02	31 ÷ 50 l/min 8.2 ÷ 13 gpm
03	39 ÷ 64 l/min 10.3 ÷ 17 gpm
04	61 ÷ 100 l/min 16.1 ÷ 26 gpm
05	92 ÷ 150 l/min 24.3 ÷ 40 gpm



Sigla di ordinazione / Ordering code



I dati non sono impegnativi, **CBF** si riserva di apportare modifiche senza preavviso.  
 The specifications are not binding, **CBF** reserves the right to introduce modifications without notice.