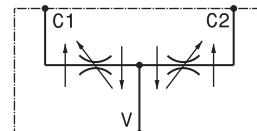
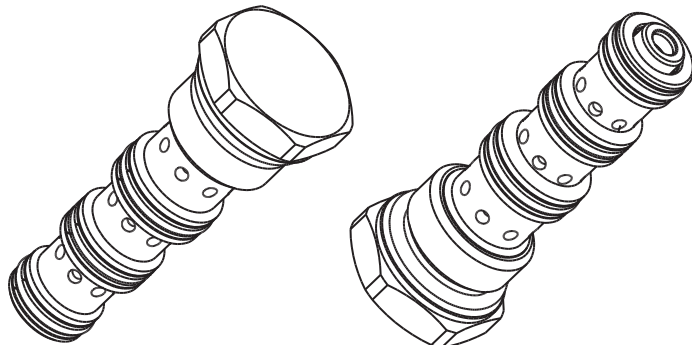


Divisore – riunificatore di flusso a cartuccia
Flow divider combiner – cartridge type
mod. DFR-10-C

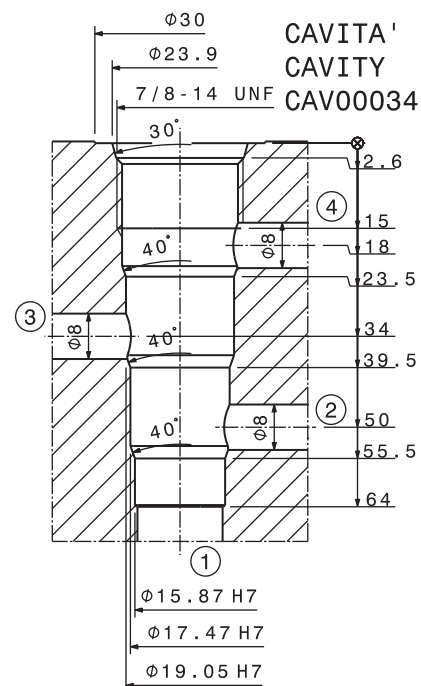
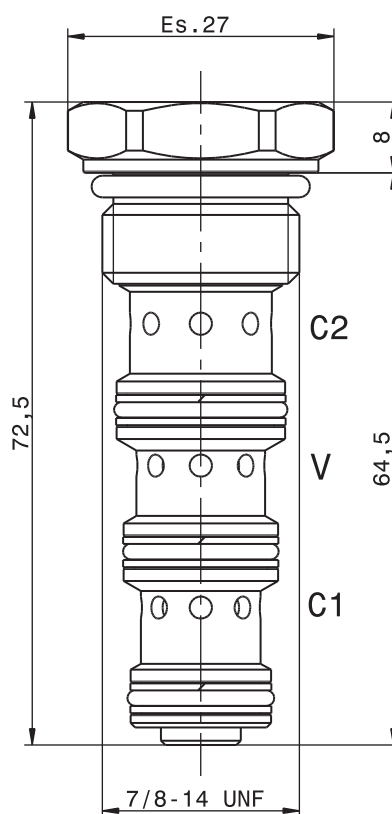


Portata massima Max flow	60 l/min 10.5 gpm
Pressione massima Max pressure	350 bar 5000 psi
Coppia di serraggio Installation torque	35 ÷ 40 Nm 26 ÷ 30 lbf ft
Errore max di divisione Flow accuracy of inlet flow	± 3%

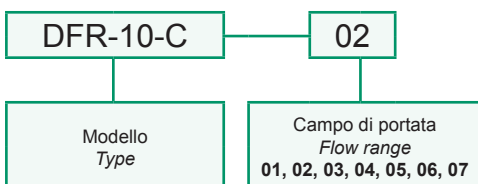
Dati e tarature ottenuti usando olio con viscosità 30 cSt a 50°C
Performances and calibrations are carried out by using hydraulic oil with 30 cSt viscosity at 50°C

Viscosità consigliate Recommended viscosity	10 ÷ 420 cSt
Temperature di lavoro Working temperature	-20 ÷ +90 °C
Filtrazione assoluta Absolute filtration	25 µ

Codice Code	Campo di portata Flow range
01	2 ÷ 4 l/min 0.5 ÷ 1 gpm
02	4 ÷ 7 l/min 1 ÷ 1.8 gpm
03	7 ÷ 12 l/min 1.8 ÷ 3.2 gpm
04	10 ÷ 16 l/min 2.7 ÷ 4.2 gpm
05	15 ÷ 25 l/min 4 ÷ 6.6 gpm
06	25 ÷ 40 l/min 6.6 ÷ 10.5 gpm
07	40 ÷ 60 l/min 10.5 ÷ 15.8 gpm



Sigla di ordinazione / Ordering code



For flow diagram see
PRESSURE DROP FLOW DIVIDER (2)

I dati non sono impegnativi, **CBF** si riserva di apportare modifiche senza preavviso.
The specifications are not binding, **CBF** reserves the right to introduce modifications without notice.