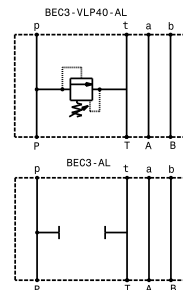
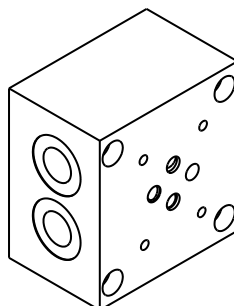
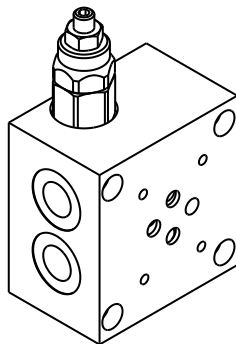


Base per elettrovalvole con o senza valvola limitatrice di pressione con attacchi laterali – luce 6
Sub-plate for solenoid valves with or without relief valve with side ports – NG6

mod. **BEC3-VLP40-AL**

Corpo in alluminio
Aluminium Body



Modello Type	Portata max Max. flow	Pressione max Max pressure
BEC3-VLP40-AL	40 l/min 10.5 gpm	350 bar 5000 psi
BEC3-AL	40 l/min 10.5 gpm	350 bar 5000 psi

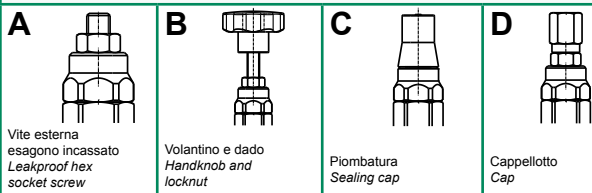
Taratura
Setting

Codice Code	Taratura standard Standard setting (Q=5 l/min)	Campo di taratura Adj. Pressure range
00	40 bar 580 psi	5÷40 bar 72.5÷580 psi
01	80 bar 1160 psi	20÷100 bar 290÷1450 psi
02	180 bar 2600 psi	40÷250 bar 580÷3600 psi
03	250 bar 3600 psi	60÷350 bar 870÷5000 psi

Dati e tarature ottenuti usando olio con viscosità 30 cSt a 50°C
Performances and calibrations are carried out by using hydraulic oil with 30 cSt viscosity at 50°C

Viscosità consigliate Recommended viscosity	10 ÷ 420 cSt
Temperature di lavoro Working temperature	-20 ÷ +90 °C
Filtrazione assoluta Absolute filtration	25 µ

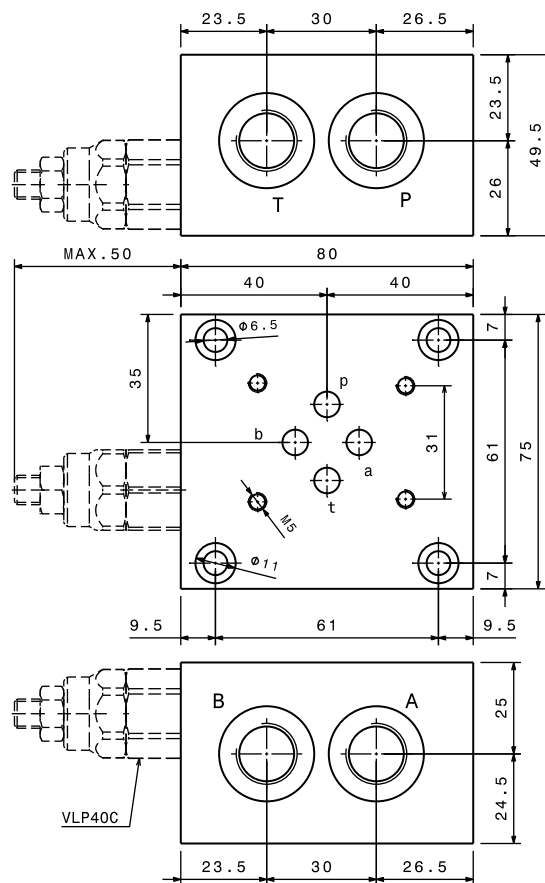
Regolazioni
Adjustments



Sigla di ordinazione / Ordering code

BEC3-VLP40-AL — **02** — **A**

Modello Type	Codice taratura Setting code 00, 01, 02, 03	Codice regolazione Adjustment code A, B, C, D
-----------------	---	---



I dati non sono impegnativi, **CBF** si riserva di apportare modifiche senza preavviso.
The specifications are not binding, **CBF** reserves the right to introduce modifications without notice.