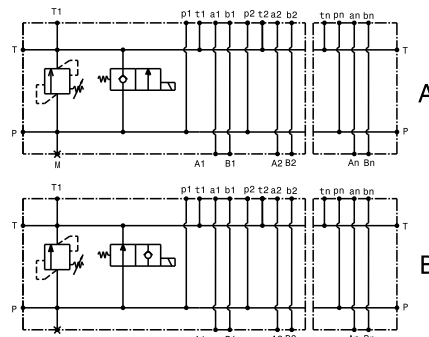
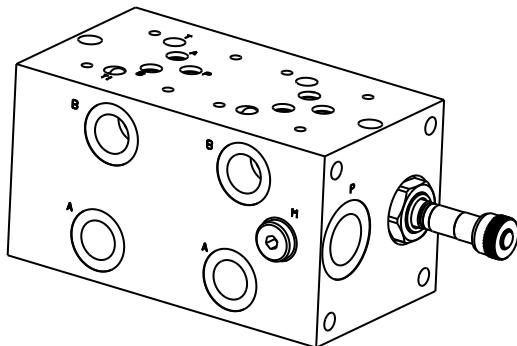


Base monoblocco con attacchi laterali, valvola limitatrice di pressione e bypass elettrico – luce10
Manifold plate for solenoid valves with side ports, relief valve and electric bypass – NG10

mod. **BEC5-VLP85-n-AL-EV**

Corpo in alluminio
Aluminum body



Portata massima Max flow	80 l/min 21 gpm
Pressione massima Max pressure	350 bar 5000 psi

Modello Type	P,T	A,B	L
BEC5-VLP85-1-AL-EV	3/4" GAS	1/2" GAS	140
BEC5-VLP85-2-AL-EV	3/4" GAS	1/2" GAS	175
BEC5-VLP85-3-AL-EV	3/4" GAS	1/2" GAS	250
BEC5-VLP85-4-AL-EV	3/4" GAS	1/2" GAS	325
BEC5-VLP85-5-AL-EV	3/4" GAS	1/2" GAS	400
BEC5-VLP85-6-AL-EV	3/4" GAS	1/2" GAS	475

Taratura Setting		
Codice Code	Taratura standard Standard setting (Q=5 l/min)	Campo di taratura Adj. Pressure range
00	40 bar 580 psi	5÷40 bar 72.5÷580 psi
01	80 bar 1160 psi	20÷100 bar 290÷1450 psi
02	180 bar 2600 psi	40÷250 bar 580÷3600 psi
03	250 bar 3600 psi	60÷350 bar 870÷5000 psi

Regolazioni Adjustments

A

Vite esterna esagono incassato
Leakproof hex socket screw

B

Volantino e dado
Handknob and locknut

C

Piombatura
Sealing cap

D

Cappellotto
Cap

Sigla di ordinazione / Ordering code

BEC5VLP853AL — **02** — **A** — **EV** — **A** — **12V CC-DC***

Modello Type	Codice taratura Setting code 00, 01, 02, 03	Codice regolazione Adjustment code A, B, C, D	Circuito Circuit A, B,	Tensione Voltage *Bobina venduta separatamente *Coil sold separately
-----------------	--	--	-------------------------------------	---

Dati e tarature ottenuti usando olio con viscosità 30 cSt a 50°C
Performances and calibrations are carried out by using hydraulic oil with 30 cSt viscosity at 50°C

Viscosità consigliate Recommended viscosity	10 ÷ 420 cSt
Temperature di lavoro Working temperature	-20 ÷ +90 °C
Filtrazione assoluta Absolute filtration	25 µ

I dati non sono impegnativi, **CBF** si riserva di apportare modifiche senza preavviso.
The specifications are not binding, **CBF** reserves the right to introduce modifications without notice.