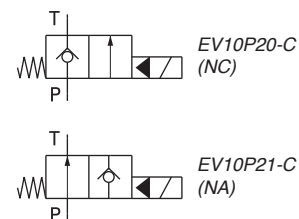
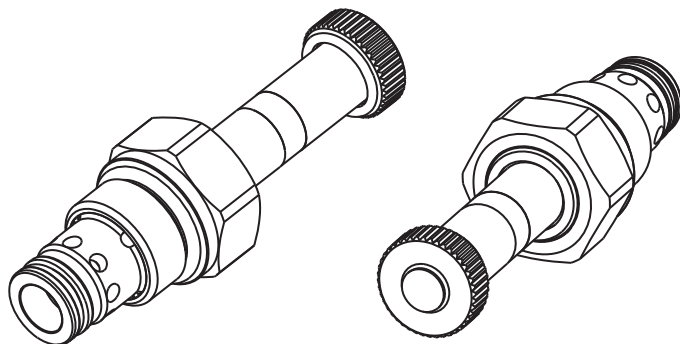
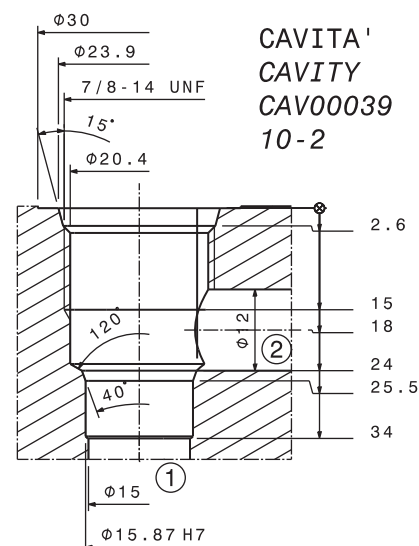
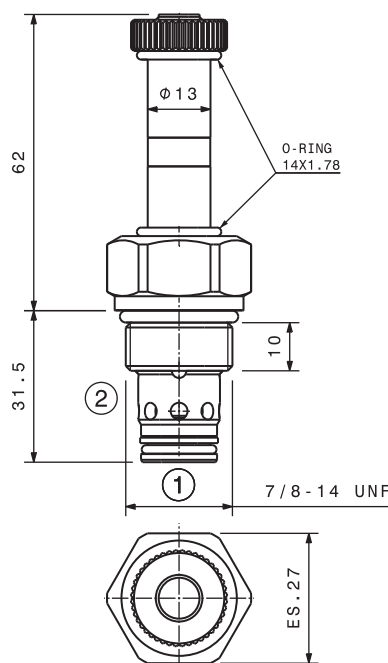


Valvola elettrica di messa a scarico 2/2 a cartuccia  
2/2 solenoid operated unloading valve, cartridge type  
mod. EV-10P2X-C



Portata massima <i>Max flow</i>	70 l/min 18.5 gpm	
Pressione massima <i>Max pressure</i>	EV-10-P2X-C	250 bar 3600 psi
	EV-10-P2X-C-Y (Su richiesta) (Upon request)	350 bar 5000 psi
Pressione apertura <i>Cracking pressure</i>	2 bar 29 psi	
Coppia di serraggio <i>Installation torque</i>	45 ÷ 50 Nm 33 ÷ 37 lbf ft	
Dati e tarature ottenuti usando olio a 30 cSt a 50°C. Viscosità raccomandate 10 ÷ 420 cSt. Temperature di lavoro -20÷+90 °C. Filtrazione assoluta 25 µ. Performances and calibrations are carried out by using hydraulic oil with 30 cSt viscosity at 50°C (122 F). Recommended viscosity 10 ÷ 420 cSt, working temperature -20÷+90 °C (-4 F÷194 F). Absolute filtration 25 µ.		

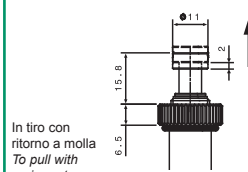


Sigla di ordinazione / Ordering code

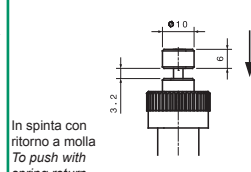
EV10P20	C*	- Pressione massima 250 bar Max Pressure 250 bar Y Pressione massima 350 bar Max pressure 350 bar
Modello/Type EV10P20 (NC) EV10P21 (NA)	* Bobina venduta separatamente mod. S1 * Coil sold separately mod. S1	

Emergenze disponibili su richiesta  
Emergency available upon request

Normally closed



Normally open



I dati non sono impegnativi, CBF si riserva di apportare modifiche senza preavviso.  
The specifications are not binding, CBF reserves the right to introduce modifications without notice.