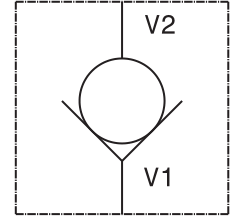
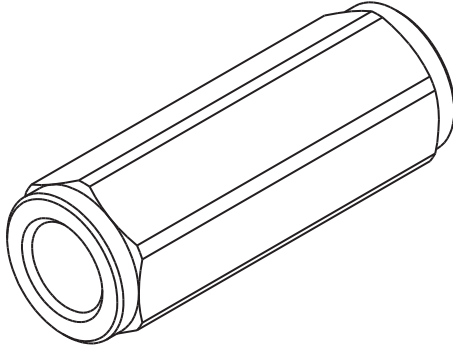
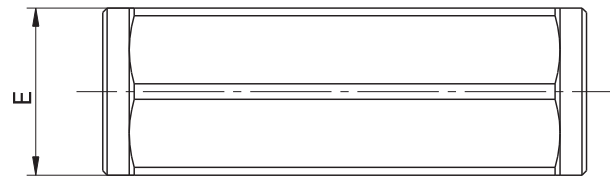
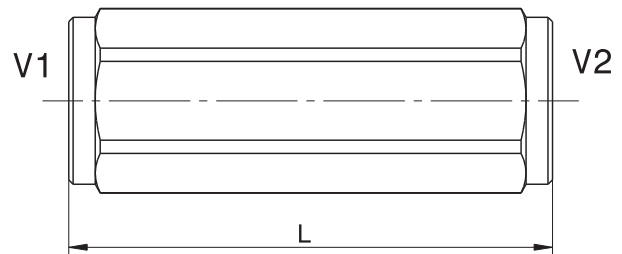


Valvola unidirezionale in linea a sfera e a cono, filettata femmina - femmina
In line check valve, ball and poppet type, female - female threaded
mod. **VU-SF** (sfera - ball) / **VU-SP** (cono - poppet)

Corpo in acciaio
Steel body



Modello Type	V1 V2	Portata massima Max Flow	Pressione massima Max pressure
VU14-SF	1/4" GAS	15 l/min 4 gpm	500 bar 7250 psi
VU38-SF	3/8" GAS	30 l/min 8 gpm	500 bar 7250 psi
VU12-SF	1/2" GAS	50 l/min 13 gpm	500 bar 7250 psi
VU34-SF	3/4" GAS	90 l/min 24 gpm	350 bar 5000 psi
VU14-SP	1/4" GAS	15 l/min 4 gpm	500 bar 7250 psi
VU38-SP	3/8" GAS	30 l/min 8 gpm	500 bar 7250 psi
VU12-SP	1/2" GAS	50 l/min 13 gpm	500 bar 7250 psi
VU34-SP	3/4" GAS	90 l/min 24 gpm	350 bar 5000 psi
VU10-SP	1" GAS	150 l/min 40 gpm	350 bar 5000 psi



Pressione di apertura
Cracking pressure

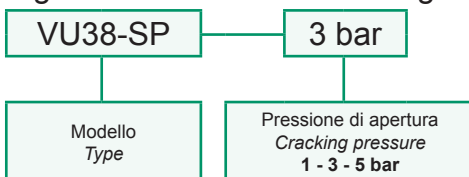
1 bar	14.5 psi
3 bar	43 psi
5 bar	72 psi

Dati e tarature ottenuti usando olio con viscosità 30 cSt a 50°C
Performances and calibrations are carried out by using hydraulic oil with 30 cSt viscosity at 50°C

Viscosità consigliate <i>Recommended viscosity</i>	10 ÷ 420 cSt
Temperature di lavoro <i>Working temperature</i>	-20 ÷ +90 °C
Filtrazione assoluta <i>Absolute filtration</i>	25 µ

Dimensioni Dimensions	L	E
VU14-SF	55	ES. 19
VU38-SF	60	ES. 24
VU12-SF	70	ES. 27
VU34-SF	85	ES. 36
VU14-SP	55	ES. 19
VU38-SP	60	ES. 24
VU12-SP	70	ES. 27
VU34-SP	85	ES. 36
VU10-SP	100	ES. 41

Sigla di ordinazione / Ordering code



Pressione di apertura
Cracking pressure
1 - 3 - 5 bar

I dati non sono impegnativi, **CBF** si riserva di apportare modifiche senza preavviso.
The specifications are not binding, CBF reserves the right to introduce modifications without notice.