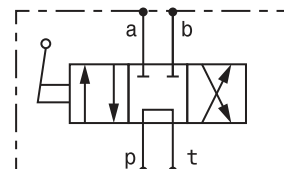
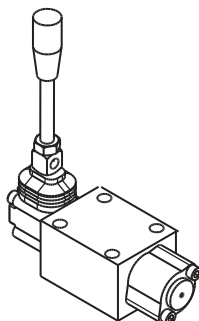
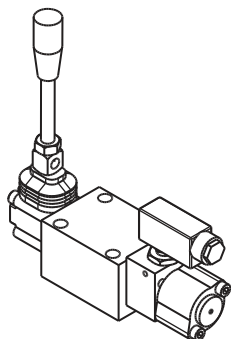


Valvola con comando a leva - luce 10 - corpo in ghisa
Directional valve, lever operated - NG10 - cast iron body

mod. DC-5



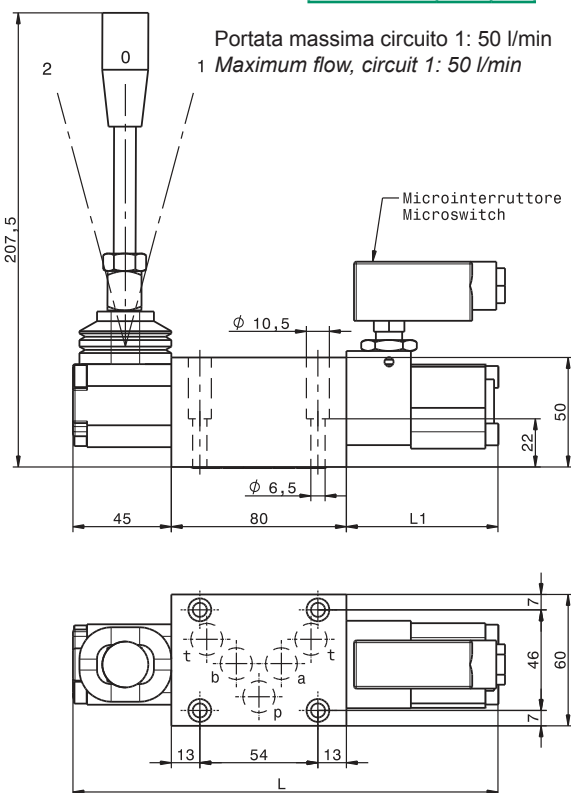
Modello Type	Portata massima Max flow	Pressione massima Max pressure P, A, B	Pressione massima Max pressure T
DC-5	70 l/min 18.5 gpm	350 bar 5000 psi	150 bar 2200 psi
DC-5-M*	70 l/min 18.5 gpm	350 bar 5000 psi	150 bar 2200 psi

Corsa MAX MAX Stroke
5.5 mm

-IL POSIZIONATORE DI TIPO C
HA UNA LUNGHEZZA DI 30 mm IN PIÙ
- THE TYPE C POSITIONER
HAS A LENGTH OF 30 mm MORE

Dimensioni Dimensions	L	L1
DC-5	165	40
*DC-5-M	195	70

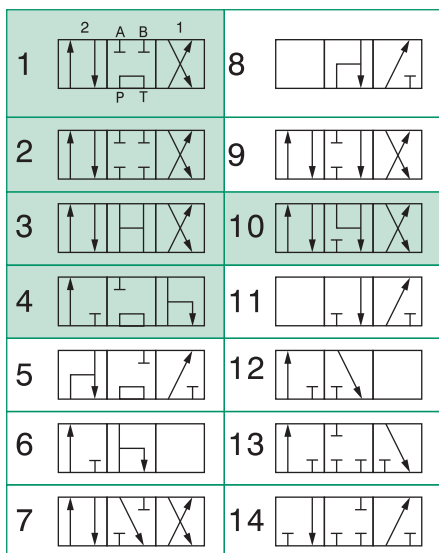
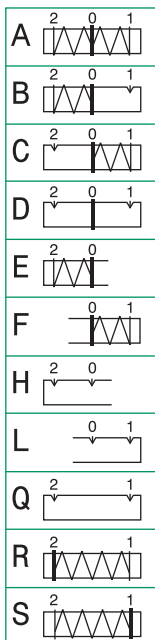
* con predisposizione microinterruttore
* with microswitch predisposition



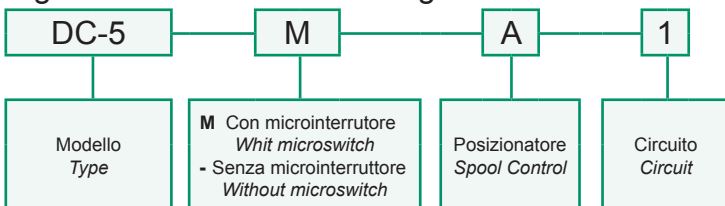
CIRCUITO
CIRCUIT

standard
su richiesta upon request

POSIZIONATORE
SPOOL CONTROL



Sigla di ordinazione / Ordering code



For flow diagram see
PRESSURE DROP MANUAL DISTRIBUTOR (3)

Dati e tarature ottenuti usando olio con viscosità 30 cSt a 50°C Performances and calibrations are carried out by using hydraulic oil with 30 cSt viscosity at 50°C	
Viscosità consigliate Recommended viscosity	10 ÷ 420 cSt
Temperature di lavoro Working temperature	-20 ÷ +90 °C
Filtrazione assoluta Absolute filtration	25 µ

I dati non sono impegnativi, **CBF** si riserva di apportare modifiche senza preavviso.
The specifications are not binding, **CBF** reserves the right to introduce modifications without notice.