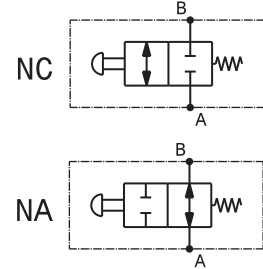
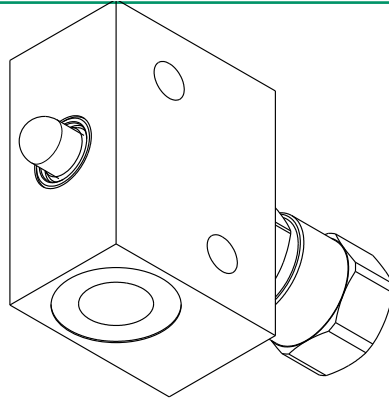


Valvola a due vie manuale
 Two ways manual valve
 mod. V2M

Corpo in alluminio
 Aluminium body



Modello Type	A, B	Portata max Max. flow	Pressione max Max. pressure
V2M-14	1/4" GAS	25 l/min 6.6 gpm	350 bar 5000 psi
V2M-38	3/8" GAS	40 l/min 10.5 gpm	350 bar 5000 psi

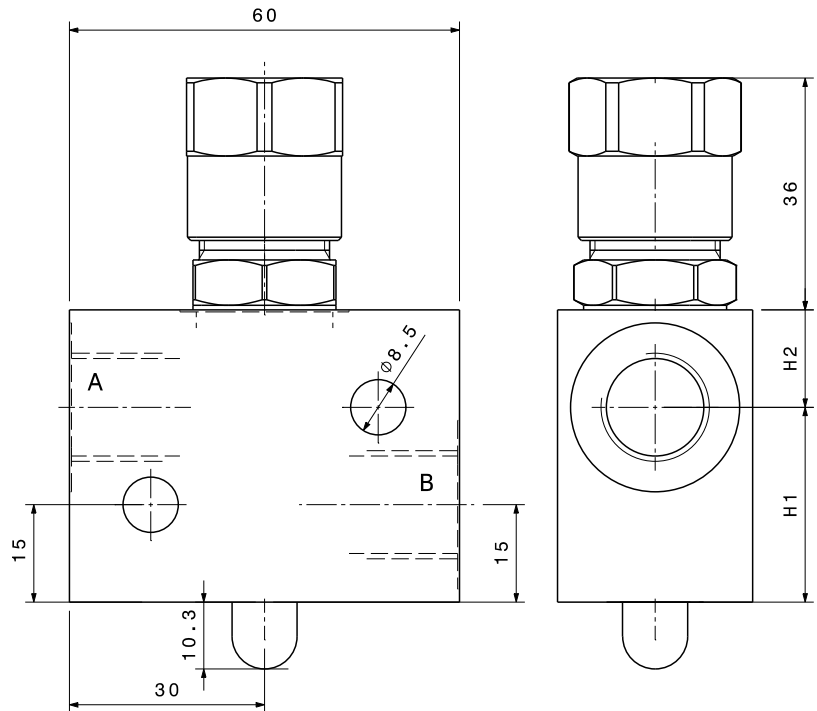
Dati e tarature ottenuti usando olio con viscosità 30 cSt a 50°C
 Performances and calibrations are carried out by using hydraulic oil with 30 cSt viscosity at 50°C

Viscosità consigliate Recommended viscosity	10 ÷ 420 cSt
Temperature di lavoro Working temperature	-20 ÷ +90 °C
Filtrazione assoluta Absolute filtration	25 µ

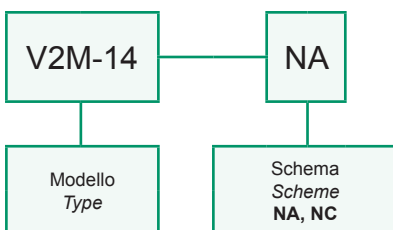
V2M-NC	Pressione d'apertura 10 bar Pilot to open pressure 145 psi
V2M-NA	Pressione di chiusura 10 bar Pilot to close pressure 145 psi

Corsa MAX MAX Stroke	7 mm
-------------------------	------

Dimensioni Dimensions	H1	H2
V2M-14	31	14
V2M-38	30	15



Sigla di ordinazione / Ordering code



For flow diagram see
 PRESSURE DROP DIRECTIONAL VALVE(1)

I dati non sono impegnativi, CBF si riserva di apportare modifiche senza preavviso.
 The specifications are not binding, CBF reserves the right to introduce modifications without notice.