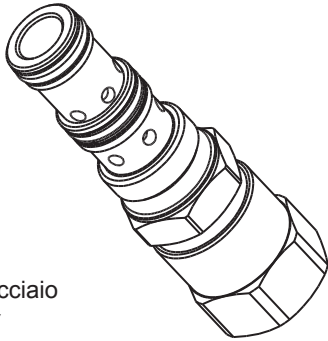
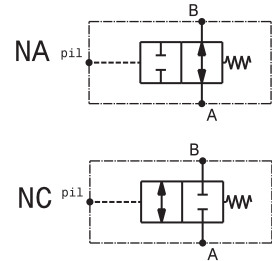
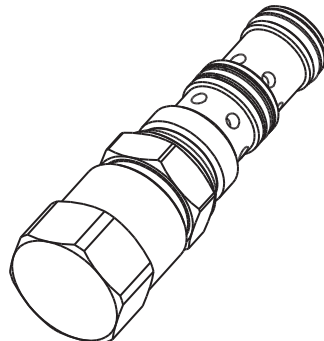


Valvola a 3 vie pilotata a cartuccia  
 3 ways, pilot operated valve – cartridge type  
 mod. V3P-C



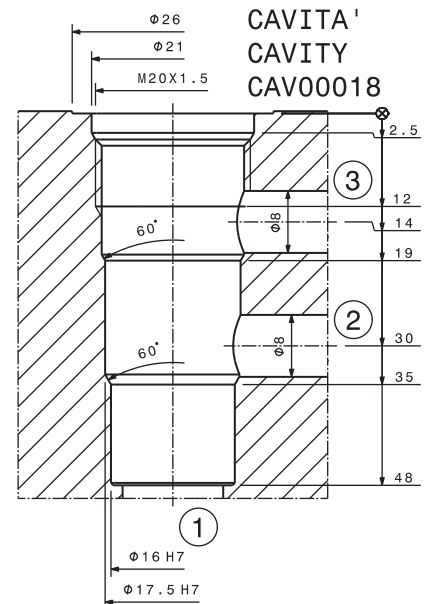
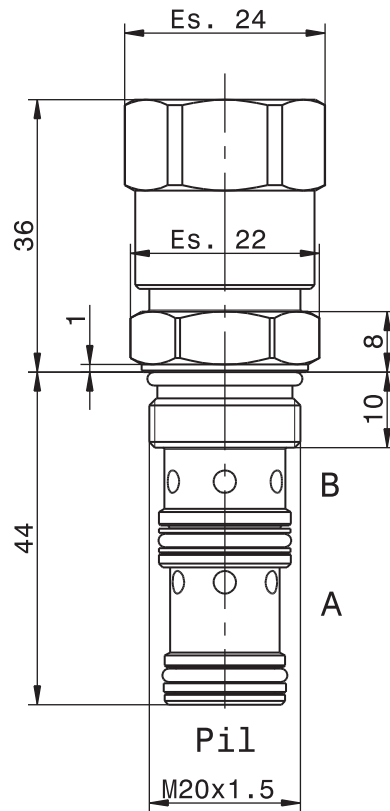
Corpo in acciaio  
 Steel body



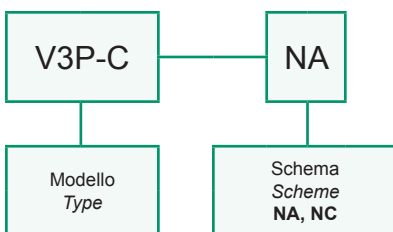
Portata massima Max flow	40 l/min 10.5 gpm
Pressione massima Max pressure	350 bar 5000 psi
Coppia di serraggio Installation torque	27 ÷ 30 Nm 20 ÷ 22.5 lbf ft

<b>V3P-C-NC</b>	Pressione d'apertura 10 bar Pilot to open pressure 145 psi
<b>V3P-C-NA</b>	Pressione di chiusura 10 bar Pilot to close pressure 145 psi

Dati e tarature ottenuti usando olio con viscosità 30 cSt a 50°C Performances and calibrations are carried out by using hydraulic oil with 30 cSt viscosity at 50°C	
Viscosità consigliate Recommended viscosity	10 ÷ 420 cSt
Temperatura di lavoro Working temperature	-20 ÷ +90 °C
Filtrazione assoluta Absolute filtration	25 µ



Sigla di ordinazione / Ordering code



I dati non sono impegnativi, **CBF** si riserva di apportare modifiche senza preavviso.  
 The specifications are not binding, **CBF** reserves the right to introduce modifications without notice.