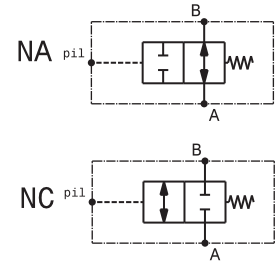
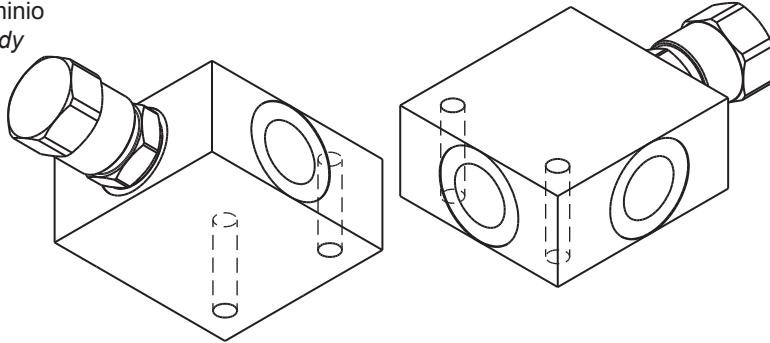


Valvole a tre vie pilotata
 3 ways, pilot operated valve
 mod. V3P

Corpo in alluminio
 Aluminium body

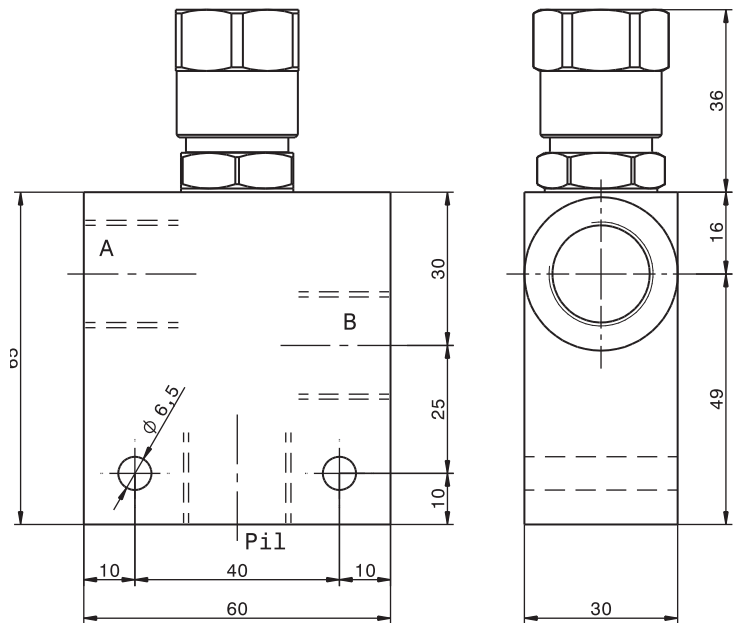


Modello Type	A, B, Pil	Portata max Max. flow	Pressione max Max. pressure
V3P-14	1/4" GAS	25 l/min 6.5 gpm	350 bar 5000 psi
V3P-38	3/8" GAS	40 l/min 10.5 gpm	350 bar 5000 psi
V3P-12	1/2" GAS	40 l/min 10.5 gpm	350 bar 5000 psi

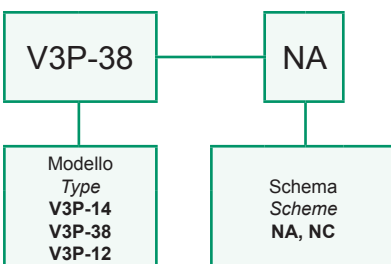
V3P-NC	Pressione d'apertura 10 bar Pilot to open pressure 145 psi
V3P-NA	Pressione di chiusura 10 bar Pilot to close pressure 145 psi

Dati e tarature ottenuti usando olio con viscosità 30 cSt a 50°C
 Performances and calibrations are carried out by using hydraulic oil with 30 cSt viscosity at 50°C

Viscosità consigliate Recommended viscosity	10 ÷ 420 cSt
Temperature di lavoro Working temperature	-20 ÷ +90 °C
Filtrazione assoluta Absolute filtration	25 µ



Sigla di ordinazione / Ordering code



I dati non sono impegnativi, **CBF** si riserva di apportare modifiche senza preavviso.
 The specifications are not binding, **CBF** reserves the right to introduce modifications without notice.