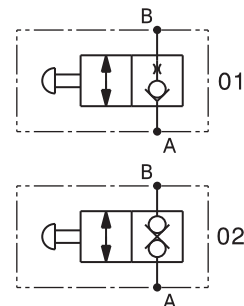
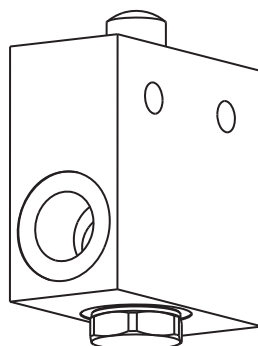
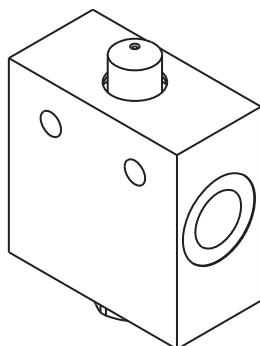


Valvola di fine corsa in acciaio
End of stroke valve, steel
 mod. VFCA (1/2"-3/4" BSP)



Corpo in acciaio
Steel body

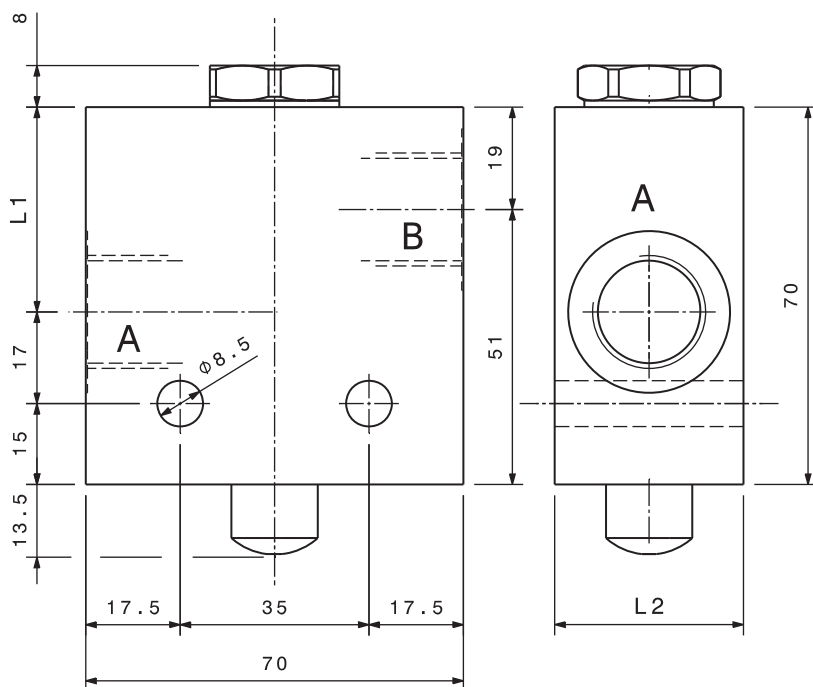
Modello Type	A, B	Portata max Max. flow	Pressione max Max. pressure
VFCA-12	1/2" GAS	80 l/min 21 gpm	350 bar 5000 psi
VFCA-34	3/4" GAS	100 l/min 26 gpm	350 bar 5000 psi

Dati e tarature ottenuti usando olio con viscosità 30 cSt a 50°C
Performances and calibrations are carried out by using hydraulic oil with 30 cSt viscosity at 50°C

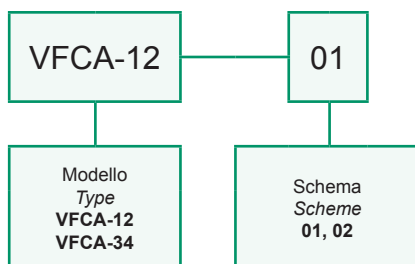
Viscosità consigliate Recommended viscosity	10 ÷ 420 cSt
Temperature di lavoro Working temperature	-20 ÷ +90 °C
Filtrazione assoluta Absolute filtration	25 µ

Corsa MAX MAX Stroke	4,5 mm
---------------------------------	---------------

Dimensioni Dimensions	L1	L2
VFCA-12	38	35
VFCA-34	34	40



Sigla di ordinazione / Ordering code



I dati non sono impegnativi, **CBF** si riserva di apportare modifiche senza preavviso.
The specifications are not binding, CBF reserves the right to introduce modifications without notice.